



THE DUX® TRAVELER

2024



FEATURED HOTELS



THE DUX[®] TRAVELER

2023

FEATURED HOTELS

THE DUX® TRAVELER ISSUE 09

FEATURED HOTELS WORLDWIDE



THE WORLD'S MOST PRESTIGIOUS HOTELS TRUST DUX®

With The DUX® Bed available in over 100 luxury hotels worldwide, you're guaranteed a great night's sleep no matter where you are in the world. Visit DUXIANA.com for featured hotels & promotions.

EUROPE

NOBIS HOTEL COPENHAGEN
COPENHAGEN, DENMARK

HOTEL D'ANGLETERRE
COPENHAGEN, DENMARK

NOBIS HOTEL STOCKHOLM
STOCKHOLM, SWEDEN

HOTEL SKEPPSHOLMEN
STOCKHOLM, SWEDEN

GRAND HÔTEL
STOCKHOLM, SWEDEN

BANK HOTEL
STOCKHOLM, SWEDEN

THE AUDO
COPENHAGEN, DENMARK

HOTEL DIPLOMAT
STOCKHOLM, SWEDEN

THE SPARROW HOTEL
STOCKHOLM, SWEDEN

PATER NOSTER HOTEL
HAMNESKÄR, SWEDEN

HOTEL RIVERTON
GOTHENBURG, SWEDEN

HOTEL ST. GEORGE
HELSINKI, FINLAND

RUNO HOTEL
PORVOO, FINLAND

HOTEL SALZBURGER HOF
BAD GASTEIN, AUSTRIA

BOHO CLUB
MARBELLA, SPAIN

BELVEDERE MYKONOS
MYKONOS, GREECE

KAPARI NATURAL RESORT
SANTORINI, GREECE

MIAMAI BOUTIQUE HOTEL
BOZBURUN, TURKEY

ASIA

THE BURJ AL ARAB JUMEIRAH
DUBAI, UNITED ARAB EMIRATES

THE CHEDI MUSCAT HOTEL
MUSCAT, OMAN

JUMEIRAH EMIRATES TOWERS
DUBAI, UNITED ARAB EMIRATES

AHN LUH ZHUJIAJIAO
SHANGHAI, CHINA

JINGSHAN GARDEN HOTEL
BEIJING, CHINA

SOUTH CAPE SPA & SUITE
NAMHEA, SOUTH KOREA

HISHIYA
KYOTO, JAPAN

AMAN KYOTO
KYOTO, JAPAN

NORTH AMERICA

**THE LANGHAM, NEW YORK,
FIFTH AVENUE**
NEW YORK CITY

THE SETAI
MIAMI, FLORIDA

THE HERMITAGE HOTEL
NASHVILLE, TENNESSEE

KESWICK HALL
CHARLOTTESVILLE, VIRGINIA

HERITAGE HOUSE RESORT
MENDOCINO, CALIFORNIA

APPLEWOOD MANOR
ASHEVILLE, NORTH CAROLINA

SPICER MANSION
MYSTIC, CONNECTICUT

THE REFORM CLUB
AMAGANSETT, NEW YORK





THE WORLD'S MOST PRESTIGIOUS HOTELS TRUST DUX®

OVER 150 OF THE WORLD'S FINEST
HOTELS REALIZE THAT THE
GREATEST LUXURY OF ALL IS
A GOOD NIGHT'S SLEEP

You know a bed is special when a hotel includes it on its amenities list along with its exclusive spa, award winning restaurants, and white glove concierge service. One of the best ways to experience the unparalleled comfort of a DUX bed is while traveling. When staying at one of these hotels, you'll be sure you're not compromising on a restorative night's sleep.

For updates on featured hotels and travel offers for DUX bed owners, please visit our website at www.duxiana.com/hotels





THE LANGHAM, FIFTH AVENUE

NEW YORK CITY

The Langham, New York, Fifth Avenue, located on Fifth Avenue in New York City, just steps from the Empire State Building, embodies refined and modern hospitality with a residential allure.

The hotel boasts 234 guestrooms and suites that are among the largest in the city that includes: DUX® luxury beds and Nespresso machines in every room; a selection of well-planned spaces for executive meetings and social events; attentive, around-the-clock services; and a Fifth Avenue facing hotel lobby. Guests are invited to experience The Langham, New York, Fifth Avenue's signature Michelin-starred restaurant Ai Fiori, part of the acclaimed Altamarea Group, and Bar

Fiori, a destination bar and lounge serving small plates, snacks and cocktails in a relaxed and convivial setting. The Langham, New York, Fifth Avenue's signature spa, Chuan Body + Soul, offers an exclusive menu of treatments integrating principles of Traditional Chinese Medicine with western therapies to offer a calm place to renew and recharge.

ADDRESS

THE LANGHAM, NEW YORK, FIFTH AVENUE
400 FIFTH AVENUE
NEW YORK, NY 10018

PHONE

(212) 695-4005

WEB

WWW.LANGHAMHOTELS.COM/NEWYORK

NEARBY ACTIVITIES

- | | | | | |
|--------------------------------------------------------------------------------------------------------------------------------------------|--------------------------------------------------------------------------------------------------------------------------------------------------|-----------------------------------------------------------------------------------------------------------------------------------------------------------------------|---------------------------------------------------------------------------------------------------------------|---------------------------------------------------------------------------------------------------------------------------------------------------------------------|
| <p>01
Bryant Park
<i>French Classical Public Park</i>
5th Ave and 42nd
(212) 768-4242
bryantpark.org</p> | <p>02
Empire State Building
<i>Iconic 102 Story Sky Scraper with Observation Deck</i>
305 5th Avenue
esbny.com</p> | <p>03
Gramercy Tavern
<i>Casual Dining Presented by Chef Michael Anthony</i>
42 E 20th Street
(212) 477-0777
gramercytavern.com</p> | <p>04
Broadway
<i>New York Theatre District</i>
(212) 541-8457
broadway.com</p> | <p>05
ABC Kitchen
<i>Jean-Georges Vongerichten's Farm to Table Restaurant</i>
35 E 18th Street
(212) 979-1999
abchome.com/eat</p> |
|--------------------------------------------------------------------------------------------------------------------------------------------|--------------------------------------------------------------------------------------------------------------------------------------------------|-----------------------------------------------------------------------------------------------------------------------------------------------------------------------|---------------------------------------------------------------------------------------------------------------|---------------------------------------------------------------------------------------------------------------------------------------------------------------------|



THE SETAI

MIAMI, FLORIDA

The Setai is an intimate, serene oceanfront resort in the heart of South Beach. Its design vision artfully combines the rich architectural history of the neighborhood and its cultural diversity with the International Art Deco movement, particularly its influence in Asia.

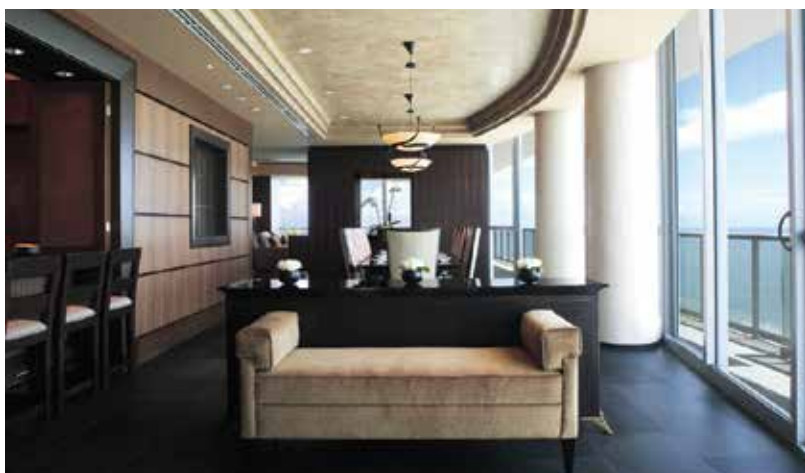
The Art Deco landmark building was originally built between 1936 and 1938 as the famed Dempsey Vanderbilt Hotel.

Next to it is our 40-story glass tower that surpasses all around it in elevation, views and design.

The Setai comprises two buildings, different yet built on the same foundations of superlative service and exceptional design.

The impeccable details of each guest room are exemplified by authentic jade pieces that were discovered in the antique markets of China and displayed to perfection on teak walls.

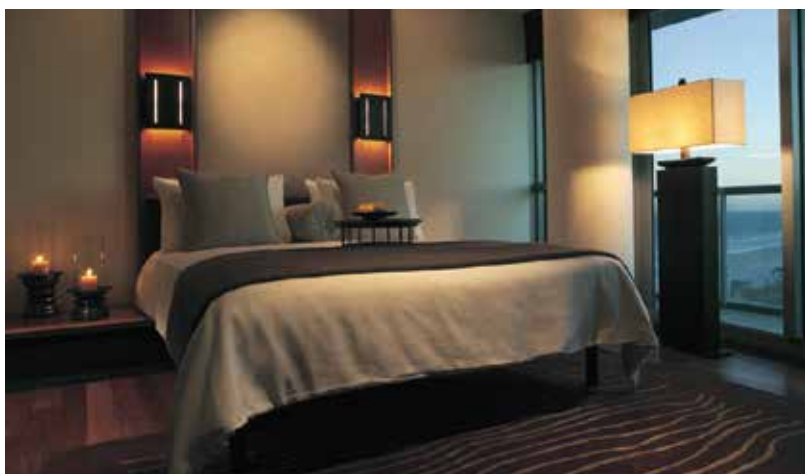
All suites at The Setai include king-size DUX® beds, chosen to provide the perfect night's sleep for our discerning guests.



NEARBY
ACTIVITIES

01
Y Charter Miami
Luxury Yacht Charters
300 Alton Rd.
(305)999-5839
ycharter.com

02
Espa at Acqualina Resort
*Holistic Spa Focused on
Complete Relaxation*
(305)918-8000
acqualinaresort.com



03
Trulucks
*An Upscale Establishment
Featuring Fresh Surf and Turf*
777 Brickell Ave.
(305)579-0035
trulucks.com

04
Bayside Marketplace
*An Outdoor Marketplace with
More Than 150 Specialty Shops*
401 Biscayne Blvd.
(305)831-8972



05
Vizcaya Museum and Garden
3251 South Miami Avenue
(305)250-9133
vizcaya.org



ADDRESS
THE SETAI, MIAMI BEACH
2001 COLLINS AVENUE
MIAMI, FLORIDA 33139

PHONE
(305) 520-6000

WEB
WWW.THESETAIHOTEL.COM

THE HERMITAGE HOTEL

NASHVILLE, TENNESSEE



Set in the heart of Downtown Nashville, The Hermitage Hotel is a timeless icon of best-in-class accommodations, service, dining and warm Southern hospitality. Originally opened in 1910, the privately owned and operated hotel has stood as Nashville's premier luxury property for more than 110 years. In 2022, the hotel completed a multi-year redesign and revitalization of its 122 oversized guest rooms, suites and public spaces, alongside a restoration of its distinctive Beaux Arts architecture. The Hermitage Hotel is home to

two new restaurants from Michelin-starred chef Jean-Georges Vongerichten, marking his first presence in the American South. "Meet me at the Hermitage" has long been a phrase familiar to Nashvillians, who gather and socialize under the historic stained-glass ceiling in the hotel's famous lobby and in the grand ballroom, adorned with Circassian walnut paneling. Recognized as a National Historic Landmark, the hotel has been honored by the Historic Hotels of America for its continued excellence.

NEARBY ACTIVITIES

01

**Drusie & Darr
by Jean-Georges**

*The flagship of Chef Jean-Georges' culinary program
(615) 345-7116*

02

**Grand Ole Opry &
Ryman Auditorium**

*Take a tour or watch a show
at Nashville's most famous,
iconic, attraction.*

opry.com
ryman.com

03

**Belle Meade Historic
Site & Winery**

*William Giles Harding's Belle
Meade Mansion, a Greek-
Revival historic landmark.*

visitbellemeade.com

04

**Country Music Hall of Fame
& Museum
(incl. RCA Studio B)**

*Dedicated to the preservation
and interpretation of
American vernacular music.*
countrymusichalloffame.org

05

Hatch Show Print

*A letterpress for show posters
for over 130 years.*

hatchshowprint.com



ADDRESS
THE HERMITAGE HOTEL
231 6TH AVENUE N
NASHVILLE, TN 37219

PHONE
(615) 244-3121

WEB
THEHERMITAGEHOTEL.COM

KESWICK HALL

CHARLOTTESVILLE, VIRGINIA



Imagine beginning each day in the plush comforts of a contemporary, sophisticated boutique hotel room where mountain vistas greet you every morning. The luxury accommodations in Charlottesville, VA feature plush DUXIANA mattresses and bespoke red flower amenities.

Play a challenging front nine on our 18-hole Full Cry golf course by Pete Dye or enjoy a daily harvest from local farms. For an incomparable dining experience in

Charlottesville, savor an inspired meal crafted by visionary Chef JeanGeorges Vongerichten.

The cuisine at Marigold by Jean-Georges reflects a passionate commitment to fresh, local and organic ingredients. The menu changes often to offer sustainable and seasonal produce that is at its peak – much of it grown at our own nearby farm. Meat, fish and dairy are locally sourced, where possible, from humanely treated, pasture-fed animals free of antibiotics and hormones



NEARBY
ACTIVITIES

01
Early Mountain Vineyards

The posh tasting room and inviting stone patio overlooking the vineyards at Early Mountain Vineyards in Madison are about as pretty as they come.
earlymountain.com

02
Monticello Country Ballooning

Enjoy an early Champagne toast while drifting over the tree tops in beautiful Albemarle County, Virginia with a hot air balloon ride.
virginiahotairballoon.com



03
Indian Summer Guide Service
Choose between vineyard rides, brewery rides, or custom rides through meadows, creeks and orchards of the Blue Ridge.
indiansummerguideservice.com

04
Dairy Market
Located in the historic Monticello Dairy Building in downtown Charlottesville, Dairy Market is the first market hall concept in Virginia's Central Piedmont.
dairymarketcville.com

05
Marigold by Jean-Georges
The cuisine reflects a passionate commitment to fresh, local and organic ingredients.
dairymarketcville.com



ADDRESS
701 CLUB DRIVE
KESWICK, VA 22947

PHONE
(434) 284-4200

WEB
WWW.MARIGOLDJG.COM

HERITAGE HOUSE RESORT

MENDOCINO, CALIFORNIA



This resort, which sits on 37 breathtaking acres, is known by the community as, “The Jewel”, of the coast. Since 2012, Heritage House Resort has been entrusted in polishing this jewel and placing it back in its’ setting. With over 136 years of heritage to uphold and a five year rest as a resort, our task is a labor of love and one that will proceed through 2014, with a continued multi-million dollar renovation. Rest assured that while

you are staying with us, as one of the many to experience the first few chapters of our revival story; we have taken every precaution necessary to ensure that the ongoing improvements will not affect your stay in any way. It is our wish that The Heritage House Resort’s revival will capture your interest as well as intrigue your imagination and desire to return the same time every year to experience future chapters.



**NEARBY
ACTIVITIES**

**01
Mendocino Coast**
*Located in the Russian
Gulch State Park*
mendocinocoast.com

**02
Point Cabrillo**
*Excellent Hiking Trails
Surround a Beautiful
Lighthouse*
(707)937-6123
pointcabrillo.org

**03
Russian Gulch State Park**
*7630 Feet of Rocky Ocean
Shores*
12301 Hwy 1
parks.ca.gov

**04
Ravens Restaurant**
Eco Minded Vegan Eatery
(707)937-5615
ravensrestaurant.com

**05
Redwood Forest**
*Home to the Tallest Trees
on Earth*
(707)465-7335
nps.gov/redw/index.htm



ADDRESS
HERITAGE HOUSE RESORT
5200 N HWY 1
LITTLE RIVER, CA 95456

PHONE
707-202-9000

WEB
HERITAGEHOUSERESORT.COM





BEACH & TRAILS

AT THE HERITAGE HOUSE RESORT

*FOR GUESTS WHO PREFER
THE GREAT OUTDOORS, THE
RESORT FEATURES 37 ACRES OF
OCEANFRONT TRAILS, GARDENS
AND FOREST PATHS FOR WALKING,
RUNNING OR HIKING.*

The Heritage Resort & Spa, Mendocino Coast is perfectly positioned on the dramatic coastline of Northern California. The resort is surrounded by beautiful and lush gardens, woodland trails framed by cypress, and a cliffside staircase descending to the rocky beach below. Eucalyptus and lavender trees invite guests to explore at their leisure.

Moments away is the village of Mendocino, which offers great places to wine and dine and the opportunity to do some shopping and other outdoor activities for those looking for something more exciting.

APPLEWOOD MANOR

ASHEVILLE, NORTH CAROLINA

NEARBY ACTIVITIES

01

Biltmore Estate Tour
*Visit America's Largest
Home and Winery*
Asheville, NC
800 411 3812

02

**North Carolina
Arboretum**
*Explore Acres of
Gardens and Trails*
Asheville, NC
828 665 2492

03

River Arts District
*Tour Dozens of Art
Studios and Galleries*
Asheville, NC
828 388 3526

04

Market Square
Eclectic Farmers' Market
Knoxville, TN

05

Pisgah National Forest
*Hike 500,000 Acres
of Stunning Forests,
Waterfalls, and Rivers*
Pisgah Hwy, NC

Located in the Montford Area Historic District of Asheville just a short walk to the heart of downtown Asheville, The Applewood Manor sits on a knoll surrounded by over an acre of giant wild cherries, apple trees, maples oaks, pines, and a variety of flora.

The property is only 3 miles from the breathtaking Biltmore Estate, a short 10-minute drive to the Blue Ridge Parkway and an ideal gateway to all the area's best routes for cycling and other outdoor adventures. During your stay, you'll enjoy a highly curated boutique bed and breakfast experience starting and ending each day in a DUX bed. Elevate your visit by taking advantage of their cycling, culinary and business leadership programs and services.

ADDRESS
62 CUMBERLAND CIRCLE
ASHEVILLE, NC 28801

PHONE
828-254-2244

WEB
WWW.APPLEWOODMANOR.COM





SPICER MANSION

MYSTIC, CONNECTICUT



Commanding sweeping views of the town, river, harbor and hills, Spicer Mansion has been a fixture in the historic Mystic community since 1853. Paying homage to the Gilded Age of refined hospitality alongside contemporary touches and uncompromising service, this luxury boutique inn, open to guests 12 years of age and older, offers eight impeccably appointed guest rooms, a world-class food and beverage program including a private restaurant and speakeasy-style cocktail bar (*coming soon*), exclusive to hotel

guests and by reservation, entertaining space and manicured gardens.

Nestled along the banks of the Mystic River, Historic Downtown Mystic is one of New England's premier vacation destinations. With a rich tradition as a waterside community, Mystic offers boutique shopping, restaurants and world-famous attractions.



NEARBY
ACTIVITIES

**01
Connecticut Wine Trail**
A tremendous variety of wine styles and stunning scenery are to be enjoyed as you meander throughout the trail.

**02
Goodspeed Opera House**
Goodspeed produces America's musical treasures to delight, inspire, and entertain you.

**03
Old Lighthouse Museum**
For more than 170 years, this modest stone citadel — a lighthouse tower attached to a dwelling — has stood at the entrance to the harbor of Stonington, Connecticut.

**04
Bank Square Books**
Located in the heart of downtown Mystic, Connecticut, Bank Square Books has been a cornerstone of the community for 25 years.

**05
Florence Griswold Museum**
This museum of art and history tells the story of how Connecticut played a pivotal role in fostering an authentic American art.



ADDRESS
SPICER MANSION
15 ELM STREET
MYSTIC, CT 06355

PHONE
(877) 497-5860

WEB
WWW.SPICERMANSION.COM

THE REFORM CLUB

AMAGANSETT, NEW YORK

We want to encourage change during your visit with us. Positive change that is, in terms of peaceful rest. The time to read and walk; the time to see the ocean and the hope, finally, that your stay with us in Amagansett will mark a longer term change in where you go to clear your mind, breathe the sea air and build some memories.

Our mission is to provide a peaceful and relaxed environment for all guests. To this end, our staff is committed to being responsive in helping ensure our guests' quiet enjoyment for a memorable stay.

Suite and cottage amenities include king-size DUX® beds that provide the perfect night's sleep for our guests.

ADDRESS
THE REFORM CLUB
23 WINDMILL LANE
AMAGANSETT, NY 11930

PHONE
(631) 267-8500

WEB
WWW.REFORMCLUBAMAGANSETT.COM

NEARBY ACTIVITIES

01

Amagansett

Amagansett Square, the heart of Amagansett and home to our sister property Meeting House and other great shops. World renowned musicians can be found across the street at Stephen Talkhouse for a small venue concert.

02

Montauk

The Montauk Lighthouse, waterfront restaurants, surfing, boat and jet ski rental and Sunset Cruises.

03

East Hampton

World renowned shopping and restaurants. Don't forget about the beaches.

04

Sag Harbor

Fishing community with the charming shops and restaurants and beautiful views of the Harbor.

05

Bridgehampton / Southampton

Area vineyards like Wolffer and Channing Daughters, shopping, golf courses and of course, more great restaurants.





BURJ AL ARAB JUMEIRAH

DUBAI - UNITED ARAB EMIRATES

NEARBY ACTIVITIES

01

Dubai Miracle Garden

*Largest Garden in the
World*

Barsha, Dubailand
971 50 266 1837

desertsofdubai.com

02

Souks

*Vendors Selling Everything
from Fine Jewellery to
Precious Oils*

dubaisouks.net

03

Talise Spa

*A luxurious space for
indulgent spa experiences*

Jumeirah Al Qasr

04

Al Mahara

*A Fine Dining Experience in
an Aquarium-like Setting*

971 4 366 888

jumeirah.com

05

Iftar

*An evening meal in the
heart of the Dubai Desert*

Conservation Reserve

971 800 272 2426

arabian-adventures.com

The distinctive sail-shaped silhouette of Burj Al Arab Jumeirah is more than just a stunning hotel, it is a symbol of modern Dubai. Yet for all the wonder this stunning structure provides when you finally see it in person, it is the service within that really makes the Burj Al Arab Jumeirah so extraordinary. Repeatedly voted the world's most luxurious hotel, this magnificent destination offers you the finest service and facilities throughout – right down to an optional chauffeur-driven Rolls-Royce. Burj Al Arab Jumeirah suite-only accommodation offers discreet check-in within your rooms, a private reception on every floor and a host of personal butlers, each a warm messenger of our unparalleled hospitality.

ADDRESS

BURJ AL ARAB
JUMEIRAH 3
DUBAI
UNITED ARAB EMIRATES

PHONE

+971 4 301 77D77

WEB

WWW.JUMEIRAH.COM





TALISE SPA

LOCATED AT THE BURJ AL ARAB

*PERCHED 150 METRES ABOVE THE
ARABIAN GULF, BURJ AL ARAB SPA
IS THE ULTIMATE DESTINATION TO
LUXURIATE, RELAX AND REJUVENATE*

Unwind and relax like you never have before in this stunning space with a beautiful view. Specifically developed for the Burj Al Arab Jumeirah guests, the core menu merges distinctive and exclusive elements with rare and natural ingredients from products with deeply stemmed Arabic heritage.

“The integrity of the senses” is used to enhance the journeys through integrating sight, sound, taste, touch and aroma with distinctive experiences.

Guests can release their self and spirituality with the creation and development of innovative and unique modules to enhance these journeys.



Image courtesy of Burj Al Arab Jumeirah

THE CHEDI MUSCAT

MUSCAT, OMAN

NEARBY ACTIVITIES

01

The Corniche

*Pedestrian Friendly
Walkway Along the
Water*

Hellat Lehnud
968 24 714636

02

Amouage

*Discover the Luxury
of Perfume*

Othman Bin Affan
Street
+971 3 785 7323

03

Ra Al Jinz Turtle Reserve

Sur, Oman
+968 9655 0606

04

Wahiba Sand Dunes

*Take In the Rolling
Desert Hills*

Wahiba, Oman
tourismoman.com

05

The Grand Mosque

*Breathtaking for its
Architecture and
Italian Marble*

Sultan Qaboos St

Where the majestic Al Hajar Mountains meet their luminous reflection in the serene waters of the Gulf of Oman, the Chedi Muscat rises amidst an elegantly landscaped twenty-one acre garden oasis with 158 Omani influenced guestrooms and beautiful villas.

This sublime yet central location equally suits leisure and business travellers while six distinct restaurants, a just opened thirteen-suite Balinese spa, three swimming pools, including the 103-metre Long Pool, 400-square metre health club plus two executive meeting rooms enhance Muscat's considerable cultural attractions.

ADDRESS

THE CHEDI MUSCAT
NORTH GHUBRA 32
WAY NO. 3215
STREET NO. 36
MUSCAT, SULTANATE OF OMAN

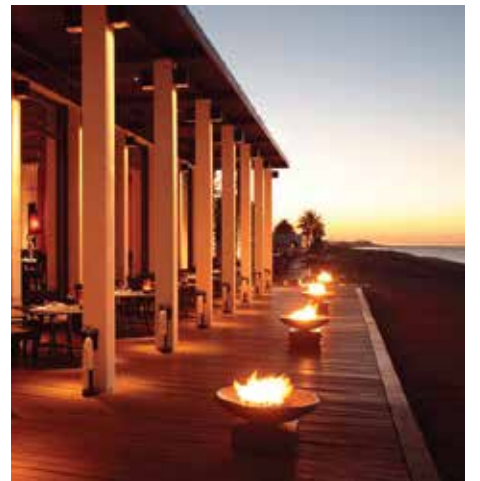
PHONE

+968 24 52 44 00

WEB

WWW.GHMHOTELS.COM/EN/MUSCAT







JUMEIRAH EMIRATES TOWER

DUBAI, UNITED ARAB EMIRATES

Jumeirah Emirates Towers is one of the most stunning architectural highlights on the Dubai skyline. The spectacular views from the hotel itself are complemented by the stellar accommodation and business services you'll find within.

Jumeirah Emirates Towers in Dubai redefines the business hotel experience; seamlessly combining high technology, efficiency and unparalleled luxury. And with our unique

and prestigious shopping destination, the Boulevard, you'll find shopping, dining and nightlife opportunities to rival any luxury destination in the world.

The 400 spacious, newly furnished rooms and suites, paired with state-of-the-art meeting and business facilities, make Jumeirah Emirates Towers one of the most popular choices for the corporate traveller and one of the finest business hotels in Dubai.

NEARBY
ACTIVITIES

01

Dubai Mall
Downtown Dubai
971 800 382246255
thedubaimall.com

02

Desert Palm Dubai
Sand Dune Drive
*Cruise Around the Sand
Dunes in your Choice
Vehicle*
Al Rigga Road
971 4 298 0016

03

Ski Dubai
*Indoor Skiing on Real
Snow in the Heart of the
Desert*
971 800 386
theplaymania.com/
skidubai

04

Skydive Dubai
Al Sufouh
971 4 377 8888
skydivedubai.ae

05

Desert Safari Tours
Dubai
Room 409 A
971 50 266 1837
desertsafaridubai.com



ADDRESS

JUMEIRAH EMIRATES TOWERS
TRADE CENTRE 2,
SHEIKH ZAYED RD
DUBAI
UNITED ARAB EMIRATES

PHONE

+971 4 330 0000

WEB

WWW.JUMEIRAH.COM



JUMEIRAH EMIRATES TOWER, DUBAI, UNITED ARAB EMIRATES



NOBIS COPENHAGEN

COPENHAGEN, DENMARK



Situated in a landmark 18,000-square-foot building that was constructed in 1903 and once housed the Royal Danish Conservatory of Music, is The Nobis Copenhagen. The 77-room property boasts a unique aesthetic, mixing the classic and timeless with contemporary design.

Guestrooms feature tall ceilings, parquet floors and high windows as well as classic Danish furniture from Carl Hansen & Son, rugs from Swedish brand Kasthall and beds from DUXIANA.

The interior is designed in co-operation with the Swedish star architect Gert Wingårdh to create a concept of contemporary five-star luxury. Therefore, it is elegant and timeless with superior comfort and first-class service, but also very personalized, sharp, and updated in every detail.

ADDRESS
NOBIS HOTEL COPENHAGEN
NIELS BROCKS GADE 1
1574 KØBENHAVN V

PHONE
+45 787 414 00

WEB
WWW.NOBISHOTEL.DK



NEARBY ACTIVITIES

01

Tivoli Gardens

19th-century amusement park, open Apr-Sep, with antique roller coaster & live entertainment program.

02

Copenhagen Central Station

An architectural landmark in the heart of the city with internal marketplace bordering trendy Vesterbro.

03

City Hall Square

Historic square with renowned shops.

04

Ny Carlsberg Glyptotek Museum

Fine-art museum with antique Mediterranean sculptures, plus 19th-century French & Danish works.

05

Rosenborg Castle

Dutch Renaissance palace & gardens, including a museum housing the crown jewels, with guided tours.

HOTEL D'ANGLETERRE

COPENHAGEN, DENMARK

Established in 1755, the d'Angleterre is an icon and a historic landmark in Copenhagen, celebrated for its elegance, luxury and style. Inspired by its rich heritage the hotel has recently undergone a complete refurbishment and has reopened as a revitalized grand palace. Balancing legacy and style with intuitive and tailored services, the d'Angleterre complements the desires of today's refined travelers.

ADDRESS

HOTEL D'ANGLETERRE
KONGENS NYTORV 34
DK-1050 COPENHAGEN K

PHONE

+45 33 12 00 95

EMAIL

INFO@DANGLETERRE.COM

WEB

WWW.DANGLETERRE.COM

NEARBY ACTIVITIES

01 Danish Natl. Gallery

*Largest Museum in
Denmark*

Sølvgade 48-50, 1307
45 33 74 84 94
smk.dk/en

02 Marble Church

*Rococco Style Dome,
Largest in Scandinavia*
Frederiksgade 4, 1265
marmorkirken.dk

03 Rosenborg Castle

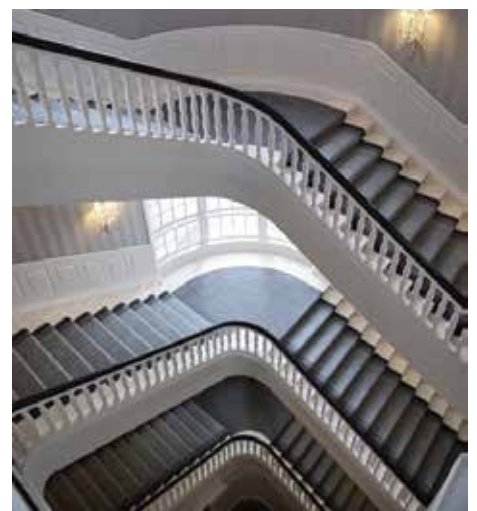
*Home to the Danish
Crown Jewels*
Øster Voldgade 4A, 1350
45 33 15 32 86
noburestaurants.com

04 Nyhavn

*17th Century Canal and
Entertainment District*
45 33 66 33 66
kk.dk

05 Sankt Annae Plads 36, 1250

Harbor View Dining
45 33 69 69 69
kgjteater.dk







NOBIS HOTEL

STOCKHOLM, SWEDEN

Nobis Hotel has been designed for optimal function, beauty, comfort and atmosphere by world renowned Swedish star architect studio Claesson Koivisto Rune. The style is contemporary and beautiful yet timeless and classic. Durable elegance, mainly in natural materials of superior quality are subtly influenced by the colors, moods and features of our Swedish Royal Capital.

In Nobis Hotel, you are at the heart of Stockholm. Discover the best restaurants, shops, museums, sights, attractions, and nightclubs our city has to offer within easy reach.

ADDRESS
NOBIS HOTEL
NORRMALMSTORG 2-4
SE-111 86 STOCKHOLM

PHONE
+46 8 614 10 00

WEB
WWW.NOBISHOTEL.COM





NEARBY
ACTIVITIES

01

Moderna Museet

*Modern and Contemporary
Art Museum*

46 8 520 235 00

modernamuseet.se

02

Sodermalm

*Trendy Waterside Town
Southern, Stockholm*

03

Stockholm Archipelago

*Second Largest Archipelago
in the Baltic Sea*

04

Fotografiska

Center for Modern Photography

46 8 509 005 00

www.fotografiska.eu/en

05

Gripsholm Castle

*Castle on the Banks of
Lake Malaren*

647 31 Mariefred, Sweden

46 159 101 94



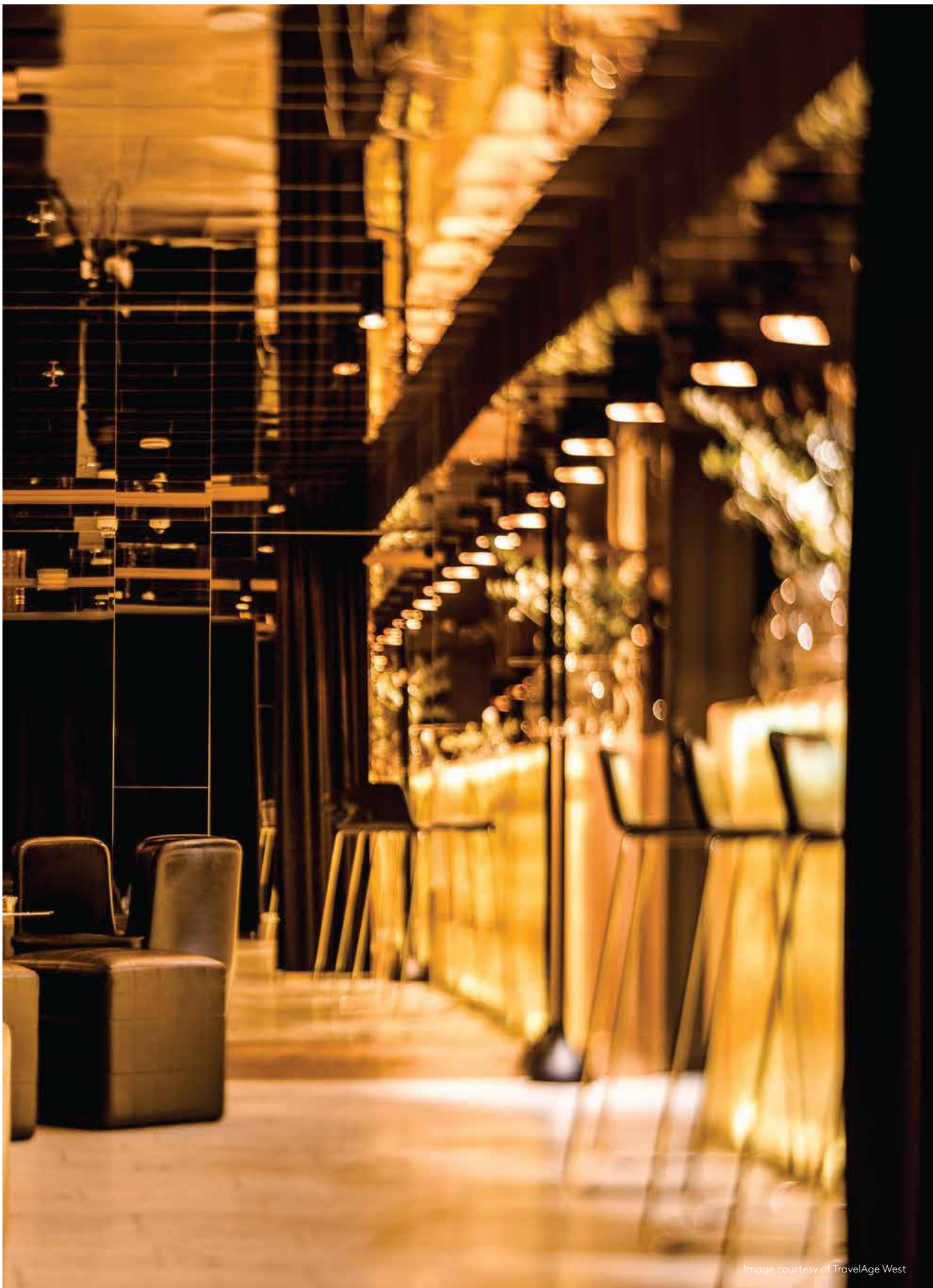
THE GOLD BAR

BAR AT THE NOBIS HOTEL STOCKHOLM

*A GOLDEN, MAGIC SHRINE OF EXQUISITE
AND INNOVATIVE COCKTAILS IN THE
CONTEMPORARY LUXURY NOBIS HOTEL.*

The Gold Bar is the perfect place either to start off the evening with little snack or to enjoy a digestive. A bar with both personality and mixology of top class. Enjoy a glass of Champagne or an exciting cocktail. Walls covered in golden mirrors and a multitude of reflecting lights create a kaleidoscopic atmosphere.

Clad entirely in golden mirrors, with exclusively designed signature brass cocktail tables, our intimate Gold Bar really shines and glows like a secret magic shrine in the night. Here our award-winning bartenders serve the most fresh and elaborately handcrafted, irresistible cocktails, classic and old-fashioned as well as new, innovative and experimental. Our ambition has been to create not a hotel bar but a cool cocktail bar housed in a hotel. Of course we have our signature cocktail – the Strawberry Basil Smash – a fresh and irresistible must-try!



HOTEL SKEPPSHOLMEN

STOCKHOLM, SWEDEN



Hotel Skeppsholmen is an award-winning, environmentally-friendly hotel, ranking at the top of Stockholm's hospitality industry in guest satisfaction. Guests find it hard to imagine that its secluded and idyllic location is just a ten minute scenic walk from the city center. Housed in a famous landmark historic building from 1699, with interiors redesigned by globally renowned Swedish architects and designers Claesson Koivisto Rune, Hotel Skeppsholmen is a true urban oasis. The hotel is embedded in the lush greenery of Skeppsholmen Island, with a spectacular view of Stockholm's waterfront.

The hotel premises, originally built as naval barracks, are classified among Sweden's most valuable historic buildings. Our rooms and suites have unique historic character and charm, pleasantly contrasted with stylish contemporary interiors. All materials, furniture and interior objects are carefully selected from leading Swedish brands and manufacturers, offering superior comfort.

NEARBY
ACTIVITIES

01

The Långa Raden
*Traditional Swedish
Home-cooked Specialties*
Hotel Skeppsholmen

02

Drottningholm Palace
*17th-Century Royal Castle,
Theater and Gardens*
Drottningholm, Sweden
krungligaslotten.se

03

National Museum
*Sweden's Premier Museum
of Art and Design*
46 8 5195 4300

04

Gripsholm Castle
Castle on Lake Malaren
647 31 Mariefred, Sweden
+46 159 101 94

05

Stockholm City Hall
*Monolithic National
Romantic Building*
Stockholm, Sweden
+46 8 508 290 00

ADDRESS
GREEN WALK 1, BOX 1616
111 49 STOCKHOLM
SWEEDEN

PHONE
+08 407 23 00

WEB
WWW.HOTELSKEPPSHOLMEN.SE



GRAND HÔTEL

STOCKHOLM, SWEDEN

Opened in 1874, the Grand Hôtel is one of Scandinavia's leading destinations located right in the center of Stockholm. Its rooms are uniquely and luxuriously appointed. And, the centerpiece of these rooms, is the ultimate in luxury and comfort – The DUX® Bed.

The Grand Hotel is also home to Mathias Dahlgren famed Matbaren restaurant.

ADDRESS

GRAND HÔTEL STOCKHOLM
SÖDRA BLASIEHOLMSHAMNEN 8
111 48 STOCKHOLM
SWEDEN

PHONE

+46 8 679 35 00

WEB

WWW.GRANDHOTEL.SE

NEARBY ACTIVITIES

01 Fåfångan

Hilltop Dining
Klockstapelsbacken 3,
116 45
46 8 509 005 00
fafangan.se

02 Nitty Gritty

Fashion Boutique
Krumakargaten
46 08 658 24 41
nittygrittystore.com

03 Sörmansleden Hike

*92 Sections of 390
Mile Trail*
Nyköping, Sweden

04 Gamla Stan

*Medieval Town with 13th-
Century Architecture*
Gamla Stan, Södermalm

05 National Museum

*Sweden's Premier Museum
of Art and Design*
46 8-5195 4300
nationalmuseum.se







MATBAREN

LOCATED INSIDE THE GRAND HOTEL

*"NATURAL PRODUCE AND
NATURAL TASTE ARE ESSENTIAL
FOR NATURAL CUISINE."*

- Mathias Dahlgren

Matbaren is a modern bistro, an informal restaurant in keeping with the times. Enjoy one or more medium-sized dishes and accompanying wines by the glass, either served at a table or up at our large bar counter. Based on the very best of fresh seasonal produce, our menu changes on a daily basis. Feel free to stop by – we always keep a few seats available at the bar.

Philosophy: With a Swedish identity on a regional platform, Mathias Dahlgren creates his cuisine, open for local as well as global ingredients and influences. A cuisine based on natural produce and natural taste – the natural cuisine.



"Mathias Dahlgren Matbaren" by Robert Young, licenced under CC by 2.0





BANK HOTEL

STOCKHOLM, SWEDEN

An intimate boutique hotel, where discerning travelers mingle with the local crowd, seeking an extraordinary experience – curious about the life, people and social scene of Stockholm. The hotel pulsates in tune with the surrounding city through day and night, an oasis for those who loves blurred lines and a vibrant lifestyle.

Bank Hotel is a vibrant, welcoming and remarkable venue with meticulous attention to detail; a venue that embraces diversity – where's it's all about personal service, quality and guest pampering in an intimate, residential environment. All rooms blend a soft, natural colour palette with elegant design flourishes that evoke the building's blend of history and modernity. Featuring luxurious beds, linen and pillows throughout, each room is special, presented with meticulous attention to detail. Bespoke fabrics and cushions complement specially commissioned artworks, creating a space that is both restful and inspiring. Bathrooms focus on elegance and quality, with judicious

use of marble and bronze adding just a splash of decadence.

At check-in you are immediately reminded of the hotel's historical bank heritage, reimagined in a bold, vibrant setting – and all within walking distance of Stockholm's finest shopping, nightlife and cultural attractions.

With some of Stockholm's finest views from multiple rooftop bar terraces, the waterfront is also on the hotel's doorstep, offering the possibility to explore the 24,000 islands that make up the Stockholm archipelago.

ADDRESS
ARSENALSGATAN 6
111 47 STOCKHOLM

PHONE
+46859858000

WEB
WWW.BANKHOTEL.SE

NEARBY ACTIVITIES

01

Dramaten

The Royal Dramatic Theatre is Sweden's national theater for the performing arts.
+46 8-665 61 00
dramaten.se

02

Royal Palace

600 rooms and the current home of The King of Sweden
Stadsholmen,
Gamla stan

03

The Swedish History Museum

One of Sweden's largest museums
13-17
Narvavaegen,
Stockholm

04

Strandvägen

Elegant Boulevard and historical walk
Östermalm,
Stockholm

05

Valhallabageriet AB

Quaint and popular local bakery
+46 8-662 97 63
valhallabageriet.se

THE AUDO

COPENHAGEN, DENMARK



As former CEO and founder of MENU, Bjarne Hansen has taken on a new venture with a strong vision to connect kindred spirits from across the globe, through this new space concept, The Audo. With a clear idea in mind, he brought together different creative individuals and began the journey to manifest his dream together with Norm Architects and Nathan Williams from Kinfolk.

The Audo is a new space in Copenhagen facilitating and celebrating human

interaction and connection, as well as artistic expression. The name, Audo, is an abbreviation of the latin phrase "Ab Uno Disce Omnes." This means "from one, learn all," defining the space as a place for people to share ideas, experiences and knowledge. The Audo is a meeting place where the international art and design community can come together, collaborate, experiment, and incorporate the inspiration they find into a unique story that they can then share with the world.

NEARBY ACTIVITIES

01

Tivoli Gardens

*The famous amusement park and pleasure gardens
Copenhagen*

02

Strøget

*Large pedestrian mall, full of specialty businesses
The old city of Copenhagen*

03

Nyhavn

*Historic waterfront area next to 17th-century canal, lined with tall painted houses
Indre By, Copenhagen*

04

Nationalmuseet

*Copenhagen's National Museum of Denmark
Copenhagen*

05

Christiansborg Palace

*Denmark's Supreme Court, the Prime Minister's office, and the Danish Parliament
Islet of Slotsholmen, Copenhagen*

ADDRESS

ÅRHUSGADE 130
2150 COPENHAGEN
DENMARK

PHONE

+45 31 26 30 80

WEBSITE

WWW.THEAUDO.COM



FROM OUR ORIGIN

HIKING KUNGSLEDEN, SWEDEN

*KUNGSLEDEN IS ONE OF THE WORLD'S BEST
HIKING TRAILS. DEEP PRECIPICES LINE LUSH
MOUNTAIN MOORS AND RIPPLING MOUNTAIN
STREAMS BECOME LATHERING RAPIDS.*

Sweden boasts one of the world's premier hiking trails- Kungsleden, a spectacular 270 mile stretch of terrain. While trekking its entirety takes quite a commitment, various stretches of the trail can be enjoyed for more manageable amounts of time.

It is said that hiking Kungsleden, also known as The Kings Trail, is about as close as you can get to a backpacker's paradise. The northern sections of Kungsleden are peppered with comfortable huts about a day's walk apart, a fact that makes it easy to go light and fast, or if you have the time, at a more leisurely pace. Another fascinating draw is that you can set up camp just about anywhere- next to a little glacier up the side valley, down by that tundra pond, or beside the roaring rivers.

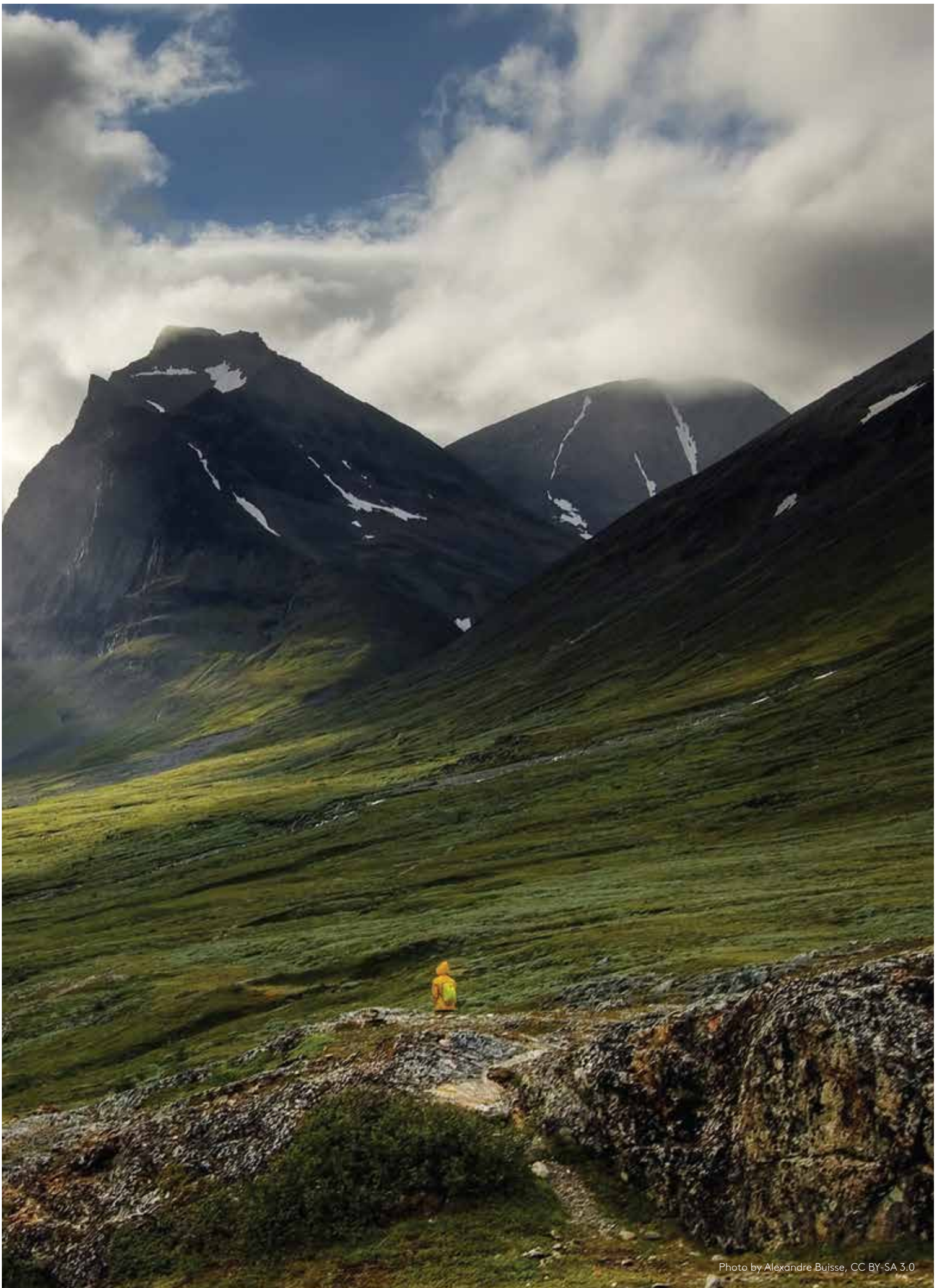


Photo by Alexandre Buisse, CC BY-SA 3.0

HOTEL DIPLOMAT

STOCKHOLM, SWEDEN



Hotel Diplomat, an elegant luxury hotel located by the Nybroviken harbor in central Stockholm, is owned and run by the fourth generation Malmström. The family have a longstanding interest in art, and in the corridors of the hotel, the work of Swedish artists adorns the walls. The building's classic 'Art Nouveau' style has been preserved and is today combined with sophisticated deco and clear, Scandinavian design. The house, originally built as a residence palace, was converted into a luxury hotel in 1966, and therefore, all rooms at Hotel Diplomat are

individual and unique. As a guest at the Hotel Diplomat Stockholm, you are equally close to popular attractions like the Royal Palace and Old Town.

Hotel Diplomat is certified to ISO 14001, and therefore uses only organic cleaning products to help safeguard the environment. Hotel Diplomat has been named Sweden's Best Hotel by the readers of Condé Nast Traveler in 2014.

NEARBY ACTIVITIES

01
Green Island of Djurgården
*Historical buildings,
 monuments, galleries, yacht
 harbours and museums*

02
Royal Dramatic Theatre
*Sweden's national stage for
 "spoken drama", est. 1788*
 +46 (0)8-667 06 80

03
Sörmansleden Hike
*92 Sections of 390
 Mile Trail*
 Nyköping, Sweden

04
Oaxen Krog
*A restaurant in an area with
 a historic industrial past*
 Djurgården, Sweden
 +46 (0) 8 551 531 05

05
National Museum
*Sweden's Premier Museum of
 Art and Design*
nationalmuseum.se

HOTEL DIPLOMAT
 STRANDVÄGEN 7C
 104 40 STOCKHOLM
 SWEDEN

PHONE
 +46 8 459 68 01

WEBSITE
WWW.DIPLOMATHOTEL.COM





THE SPARROW HOTEL

STOCKHOLM, SWEDEN

A cozy, genuine and personal boutique hotel with a unique French touch in Stockholm city.

The Sparrow Hotel is Stockholm's new colorful boutique hotel. An intimate hotel that is a warm and welcoming place. The hotel is located in the middle of town at Stureplan, where it is as close to the heart rate as to the break, to the job meeting as to the pub turn.

It should be easy to have a good time at The Sparrow Hotel. Take a look at The Sparrow's French bistro created by Mathias Dahlgren and Staffan Naess and find something good on the menu. Crevettes or Quiche Lorraine? Sip into the wine bar and botanize among well-selected wines. Welcome to the genuine bistro, the inviting wine bar and the personal rooms.

ADDRESS
BIRGER JARLSGATAN, 24, 114 34
STOCKHOLM, SWEDEN

PHONE
+46 08-122 173 00

WEB
WWW.THESPARROW.SE



NEARBY ACTIVITIES

01

Gamla Stan

One of Europe's great medieval centres, spread over 3 islands

Stockholm's Old Town

02

Vasa Museum

See relics from the 17th-century reign of the all-conquering King Gustavus Adolphus

www.vasamuseet.se

03

Humlegården

A park that is a beautiful green oasis

Östermalm, Stockholm

04

Monteliusvägen

A walking path with a magnificent view of Lake Mälaren, Stockholm City Hall, and Riddarholmen, especially at sunrise and sunset

Northern shore of Södermalm

05

Drottningholm Palace

One of Sweden's three World Heritage Sites

Western outskirts of Stockholm

PATER NOSTER HOTEL

HAMNESKÄR, SWEDEN



Out in the outpost of the archipelago, on one of Sweden's most windblown, barren and exposed places, Pater Noster – the king of lighthouses, was eventually built. This state-of-the-art masterpiece gave hope and guided seafarers safely for over a century. Next to it, the lighthouse keepers and their families built their home, a small-scale community on an island which had always been perceived as uninhabitable. For more than one hundred

years they lived out here, on the terms dictated by the island and the sea. Now, the doors to the lighthouse master's home have once again opened and now reimagined for the public. A place for seafarers from near and far, for nature lovers and pleasure seekers, for those who are seeking tranquility or good company. Here, where the light is brighter and the wind is wilder, the ocean saltier and the seafood fresher.

NEARBY ACTIVITIES

01

Hamneskär Island Tour

Learn the island's rich history, climb the lighthouse, and explore the coast

02

Carlstens Fästning

Tour the famous stone military fortress, est 1658

Marstrand, Sweden

+46 303 611 67

03

Porpoise Safari Tour

See the porpoises close up and marvel at Kullaberg's breathtaking scenery

Kullaberg Nature Reserve

04

Göteborgs Konstmuseum

Take in the stunning collection of internationally famous Nordic works

goteborgskonstmuseum.se

05

Haga District

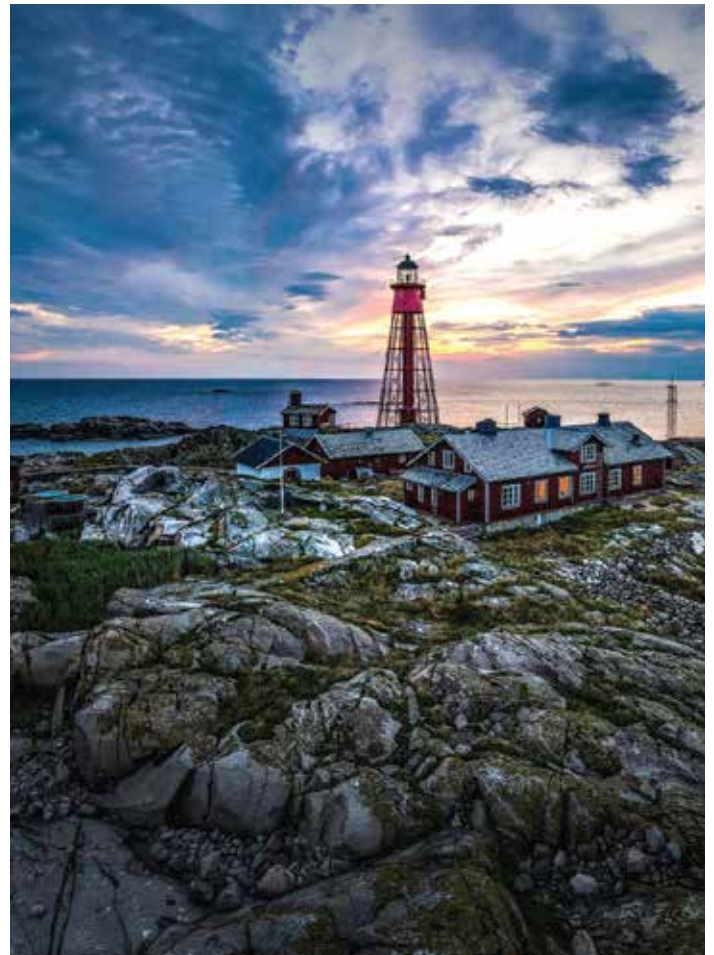
Explore picturesque 19th-century neighborhoods

Gothenburg, Sweden

PATER NOSTER
HAMNESKÄR
1471 51 HAMNESKÄR
SWEDEN

PHONE
+46 73 324 77 04

WEBSITE
WWW.PATERNOSTER.SE



HOTEL RIVERTON

GOTHENBURG, SWEDEN



Hotel Riverton is a four star hotel in central Gothenburg that offers a variety of modern rooms, fully equipped apartments and a popular restaurant & skybar located on the top floor. Each room has been meticulously furnished with a contemporary elegant design and provides everything to ensure your holiday or your business stay in Gothenburg is more than comfortable. Guests are offered the very best in every detail. The 175 room and 5 apartment hotel is family owned and does not belong to any chain, enabling them to adapt their offering without any chain standardisations, making it truly flexible in service to their guests.

The attention to the quality and design of every detail makes its mark throughout the hotel, from the lobby up to the restaurant on the top floor. Materials are carefully sourced by the hotel to create comforting and functional spaces for guests to enjoy. Hotel Riverton is superbly located by the waterfront in central Gothenburg, only a few minutes away from some of the main attractions of the city, the historic district Haga, popular shopping street Kungsgatan and Lindholmen Science Center.

NEARBY
ACTIVITIES

01
Gothenburg Museum of Art
*Significant Nordic and
international artwork*
goteborgskonstmuseum.se

02
Archipelago of Gothenburg
*Granite cliffs and
picturesque fishing villages*
Less than an hour from
Gothenburg city center

03
Botanical Garden
*One of Europe's top and
largest botanical gardens*
Gothenburg, Sweden
botaniska.se

04
Gotaplatsen
*A popular public square and
home of Poseidon statue*
Southern end of Avenyn

05
Haga
*A charming area of
traditional wood buildings,
cobble streets, candlelit
cafes, terraced courtyards,
and bohemian vibes*
Haga Nygata, Gothenburg

ADDRESS
STORABADHUSGATAN 26
SE- 11 21 GOTHENBURG
SWEDEN
VAT: SE 5564389004 01

PHONE
+46 31 750 10 00

WEB
WWW.RIVERTON.SE



HOTEL ST. GEORGE

HELSINKI, FINLAND



While the oldest sections of Hotel St. George date back to the 1840s, the most iconic section, designed by architect Onni Tarjanne, was completed in 1890. Tarjanne is best known for designing the Finnish National Theatre in 1902.

Through the years, the building at Yrjönkatu 13 has hosted, for example, the Finnish Literature Society SKS, the printing house for the first Finnish newspaper Suometar and The Helsinki Finnish Club. Stories from its

past have played a crucial role in the interior design of the hotel.

Housed in a magnificent historic building, the hotel's 10 000 square metres on 7 floors are home to 148 rooms and five suites - all with DUX® beds.

NEARBY ACTIVITIES

01

Restaurant Andrea
Lönrotinkatu 4 | Helsinki
+358 9 4246 0042

02

St. George Care Spa
Treatments based on the philosophies of two brands, both of which embrace the power of nature: the Hungarian skincare line Omorovicza and Finland's own Lumene.
+358 (0)9 4246 00 50

03

Design District Helsinki
Explore this central area full of design and antique shops, fashion stores, museums, art galleries, restaurants and showrooms.

04

Sinebrychoff Art Museum
A historic house museum downtown filled with old European master paintings
+358 (0)294 500 460

05

Seurasaari Island
Hike this small island connected by a bridge filled with historical Finnish houses. It's an open air museum in summer.



ADDRESS

HOTEL ST. GEORGE
YRJÖNKATU 13
00120 HELSINKI, FINLAND

PHONE

+358 9 4246 00 11

WEB

WWW.STGEORGEHELSINKI.COM

RUNO HOTEL

PORVOO, FINLAND



RUNO started from a dream to create a premier hotel experience well above the everyday, but still approachable and inviting. RUNO Hotel Porvoo is an entity whose every detail has been thought out and designed, blending Finnish traditions with contemporary Nordic design, harmonious colors, and rustic-meets-modern allure.

Comfort and aesthetics as a whole, increase well-being, and are present both in the big lines and in the small details.

A landmark Art Nouveau hotel building, built in 1912 at the gate of old Porvoo, has been

faithfully restored to its style. The interior, which breathes a rustic modern atmosphere, brings out the layers of recent history: thoughtfully combines Finnish and Nordic design with high-quality natural materials and a harmonious color scheme.

In addition to the living room, kitchen and bar open to all, the guests have access to a unique sauna section and spa treatments in the attic, as well as up-to-date meeting facilities. All 56 rooms are soothing and relaxing, each unique and worth visiting.

NEARBY ACTIVITIES

01

Cathedral of Porvoo

Porvoo's most famous attraction, this beautiful, central landmark, stone church represents the late Gothic style.

porvoonseurakunta.fi

02

Brunberg Candy Factory Shop

In our experiential factory store, you can take a peek at how artisan chocolate is made and at the same time get to know its 150-year history.

brunberg.fi

03

Porvoo Old Town

Porvoo is known for its charming Old Town, amazing restaurants, beautiful nature and year round activities.

visitporvoo.fi

04

Söderskär Lighthouse

Built in 1862 and located in the outer archipelago of Porvoo, about an hour's boat ride from Helsinki, Söderskär is part of a nature reserve.

bistrogustaf.fi

05

The Runeberg Home

Enjoy the atmosphere of an 1860s writer's home in the original home of Finland's national poet Johan Ludvig Runeberg (1804–1877) and his wife Fredrika (1807–1879).

porvoo.fi

ADDRESS

RUNO HOTEL PORVOO
RIHKAMAKATU 4
06100 PORVOO, FINLAND

PHONE

+358293191200

EMAIL

INFO@RUNOHOTEL.COM

WEBSITE

WWW.RUNOHOTEL.COM



HOTEL SALZBURGER HOF

BAD GASTEIN, AUSTRIA



Built between 1889 and 1907, the Hotel Salzburger Hof enjoys a long history and tradition of excellence. Centrally located in Bad Gastein Austria, guests can enjoy stylish ambiance with all the luxurious and modern amenities one expects from a luxury hotel. Wonderful panoramic views, its close proximity to ski lifts and the Thermal Spa coupled with tasteful design, create the perfect environment for a relaxing and unforgettable holiday.

ADDRESS

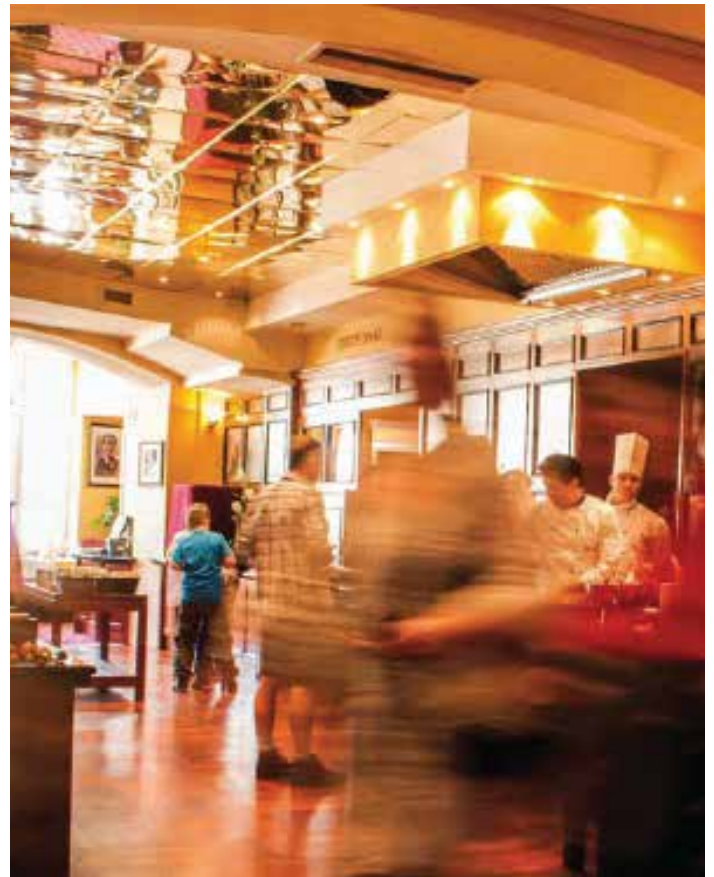
HOTEL SALZBURGER HOF
GRILLPARZERSTRASSE 1
5640 BAD GASTEIN
AUSTRIA

PHONE

+43 6434 / 20 37-0

WEB

WWW.SALZBURGERHOF.COM



NEARBY ACTIVITIES

**01 Stubnerkogel
Suspension Bridge**

*140 Meter Hanging Bridge
Stubnerkogel, Bad Gastein
skigastein.com*

02 Gastein Cave

*Healing Cave Therapy
gastein.com/region-
villages/badgastein*

**03 Pine Magic on the
Graukogel**

*400 Year Old Tree
Lined Path
gastein.com/region-
villages/badgastein*

**04 Panorama Platform
Glocknerblick**

*Views of Austria's Highest
Mountain
skigastein.com*

**05 Schlossalm-Angertal-
Stubnerkogel**

*The largest connected
ski area for all levels of
difficulty
+43 (0) 6432 64 55
skigastein.com*



BOHO CLUB

MARBELLA, SPAIN



Boho Club is a luxury boutique resort located in the city of Marbella, the old Swedish forest center, which invites you to enjoy an oasis of tranquillity. Surrounded by lush vegetation on a landscape dominated by palm trees, banana trees and large cacti, Boho Club boasts an incredible view of the La Concha mountain. Situated in between the Golden Mile and Puerto Banus, its elegant facility boasts 20 cozy rooms, a Boho Suite and nine bungalow suites. The Boho Club also offers guests two refreshing swimming pools, two restaurants and the Boho Bar with a terrace open to the wonderful garden. Every detail

has been thoughtfully curated and artfully delivered to ensure a meaningful, unscripted and personal stay.

The beach is a beautiful two minute walk from the hotel. The luxury boutiques and the big yacht dock of Puerto Banus are 1 1/4 miles away. The old town of Marbella is approximately 6 miles away where one can walk along cobbled streets or visit the Plaza de los Naranjos. If you prefer, you can play a game of golf on one of the many courses in the surrounding area.

NEARBY ACTIVITIES

01

Puerto Banús and Marbella Old Quarter

Also known as Casco antiguo de Marbella – gives travelers a taste of old Spain

02

Avenida del Mar

Pathway to both Marbella’s beaches and most popular restaurants, cafes & shops

03

La Concha

Hike the iconic mountain for a view to the Atlas Mountains in Morocco

04

Los Naranjos Golf Club

Most popular green located down the coast from central Marbella near Puerto Banús.

losnaranjos.com

05

The Museo del Grabado Español Contemporáneo

Engraving by Miró, Picasso, Dalí & other Spanish artists

mgec.es

BOHO CLUB
URBANIZACION LOMAS DE RIO VERDE 144, 29602 MARBELLA SPAIN

PHONE
+34 952 157 221

WEBSITE
BOHOCLUB.COM



BELVEDERE MYKONOS

MYKONOS, GREECE



The Belvedere luxury boutique hotel in Mykonos lies amongst lush gardens of cypress trees, bougainvilleas and wild laurels. In the morning, the soft hum of birds chirping against the distant buzz of Cyclades Island village life, gently welcomes guests to the beginning of a new day. A new day, that can start off with a soothing soak in the Jacuzzi or a revitalizing massage at the sedate ambiance of this luxury hotel in Mykonos.

Reflecting the spirit of Mykonos and the grandeur of Small Luxury Hotels in status, the white interiors of the rooms and suites of the Belvedere Hotel create a cooling, calm ambiance, truly refreshing in every sense. The

Belvedere Hotel, one of the best boutique hotels in Mykonos, is based around one of the oldest, most inherently romantic mansions in Mykonos Town, the Mansion Stoupa dating back to 1850. Bringing it into the 21st century and turning it into one of the finest hotels in Greece, has been an ongoing effort of loving and thoughtful intent.

ADDRESS

AGIOU IOANNOU, SCHOOL OF FINE ARTS DISTRICT
MYKONOS 846 00
GREECE

PHONE

+30 22890 25122

WEB

WWW.BELVEDEREHOTEL.COM

NEARBY ACTIVITIES

01

Panagia Paraportiani
Byzantine Church
Overlooking the Sea
Kastro, Chora

02

Little Venice
Picturesque Coastline
Mitropoleos Georgouli,
Mykonos
griechenland-insel.de

03

The Windmills
A Quintessential Feature of
Mykonos Landscape
greeka.com

04

Psarou Beach
Powdery Sand and Clear
Blue Waves
+30 21 0923 6760

05

Super Paradise Beach
A Sprawling Stretch of
Coastline
Paralia Super Paradise,
846 00



KAPARI NATURAL RESORT

SANTORINI, GREECE



The distinctive Cycladic tradition meets minimalism. Located in the gorgeous village of Imerovigli, boasting a majestic view of the caldera, KAPARI Natural Resort is an exclusive sanctuary that invites you to experience the most relaxing and enjoyable vacation of your life. A 300 year old, recently restored, complex of traditional dwellings and houses, typical of the islands unique architecture, welcomes you with state-of-the-art personal services.

ADDRESS
KAPARI NATURAL RESORT
IMEROVIGLI
SANTORINI 84700
GREECE

PHONE
+30 22860 21120

WEB
WWW.KAPARISANTORINI.GR

NEARBY ACTIVITIES

01
Arcobaleno
Highest Point in Fira
Fira 847 00

02
Kamari Beach
Black Sand Beach
Kamari, Greece

03
Boutari Winery
Oldest Producer of
Fine Wine in Greece
Megalochori, Greece
+30 2286 081011
boutariwines.com

04
Ammoudi Bay
Quaint Fishing Village
Unnamed Rd.,
Santorini
+30 2286 071614

05
Ancient Akrotiri
Known as Pompeii of
the Aegean Sea
GPS N36.35 E25.40
odysseus.culture.gr



THE MIAMAI

BOZBURUN, TURKEY



Miamai Boutique Hotel's minimalist architectural style is the work of Berke de Bensason from DE.X Architecture, reflecting the refined and subtle taste of discernable travelers. The rooms have been positioned to maximize the stunning view of the sea. There is beautiful natural sunlight in addition to relaxing shade provided by the pine trees and natural flora that surround the property.

The healthy tastes of Mediterranean cuisine form the basis of the fine-dining experience crafted by the exclusive chef Ramazan Bilgi.

At the helm of the hotel is the General Manager Metin Sarier, who has an unmatched reputation in Turkish hospitality circles.

Miamai Boutique Hotel is the ideal setting for a heavenly honeymoon or a perfect romantic seaside getaway for discerning travelers, far from the crowds and the routine of everyday life. Comfortable accommodations, exquisite service, fine-dining, good tunes and wellness, form the essence of the Miamai Boutique Hotel experience along with the natural beauty of Bozburun.



NEARBY ACTIVITIES

01

Mermaid at Saranda

Grab a drink in a cafe over-arched by a 2,000- year-old plane tree in the mountain village of Bayir

02

Wander the Coast

No Mediterranean country does the slow, lazy, coast-hugging daytrip on water better than Turkey.

03

The Honey House Museum

Turkey is the biggest producer of pine honey. Visit the hexagonal shaped museum to taste and learn about the provision.

04

Take the Trail

Enjoy a stent on Turkey's 500-mile-long trail, that winds through this peninsula.

05

Turtle Watch

Watch turtles make their way up the beach to lay eggs, and if you're lucky enough, watch the young turtles skitter into the ocean when they are mature.



ADDRESS

ADATEPE MEVKII NO: 83
BOZBURUN, MARMARIS
48710 MUĞLA, TURKEY

PHONE

90 252 456 27 75

WEB

WWW.MIAMAIOTEL.COM

AHN LUH ZHUJIAJIAO

SHANGHAI, CHINA

Located in Zhujiajiao town in Qingpu District of Shanghai, this location is a destination clothed in history. A mere 30 miles from downtown Shanghai, Ahn Luh Zhujiajiao is a portal into another era.

Built around a restored 600-year-old ancient courthouse, historically known as “Wu Feng Lou” from the Ming Dynasty, the resort boasts history and structural art at every turn. The Old Qing Dynasty Theater, located on the resort grounds, makes for a great place to reflect upon Chinese tradition and culture.

ADDRESS
505 ZHUHU ROAD,
ZHUJIAJIAO TOWN,
QINGPU DISTRICT
SHANGHAI, CHINA

PHONE
+86 21 5923 7777

WEB
WWW.AHNLUH.COM

NEARBY
ACTIVITIES

01

Dianshan Lake

*Beautiful Fresh Water Lake
surrounded by rolling hills
Zhujiajiao, Shanghai*

02

Frontline Street

*Historically Preserved
Street from Qing and
Ming Dynasties
Othman Bin Affan Street*

03

Historical Bridge Tour

*Walking Tour Highlighting
Historical Bridges*

04

Zhujiajiao Town

*Take In the Sites
While Wandering the
Ancient Town*

05

Tapas Bar

*Chinese style snack bar
is inspired by the popular
Spanish snack - Tapas
+86 21 59237777*







JINGSHAN GARDEN HOTEL

BEIJING, CHINA

Overlooking the infamous Temples of Jingshan, The Jingshan Garden Hotel is a Cultural Oasis of tranquillity in the very heart of the vibrant city of Beijing. It is located in Sanyanjing Hutong, one of the city's most historic and central neighborhoods, within walking distance of The Forbidden City, Jingshan and Beihai Parks, as well as the Palace and National Art Museums. Just a few minutes' walk away from the famous shopping and food Streets of Nanluoguxiang

Hutong, The Jingshan Garden Hotel, ideal for either work or pleasure, emotionally connects their guests with the intense historical, cultural and artistic life of authentic and historic Beijing. An intimate traditional Chinese courtyard hotel invokes the past, yet is replete with modern facilities. All 15 individually appointed guest rooms have modern and comforting, yet traditional designs equipped with DUX luxury beds and down duvets for maximum sleep comfort.

NEARBY
ACTIVITIES

01

Explore the Area

Hop on a complimentary bicycle and ride along the historic hutongs (lanes)

02

The Great Wall

Along the total length of the Great Wall around Beijing, there are eight major sections including Badaling, Juyongguan, Huanghuacheng, Jiankou, Mutianyu, Gubeikou, Jinshanling, and Simatai

03

Forbidden City

The Forbidden City was the Chinese imperial palace from the Ming Dynasty to the end of the Qing Dynasty

04

Tiananmen Square

Tiananmen Square is a large city square in the center of Beijing, China, named after the Tiananmen Gate (Gate of Heavenly Peace) located to its North, separating it from the Forbidden City

05

Temple of Heaven

The Temple of Heaven, situated in southeastern Beijing, is the largest extant sacrificial temple in China.

ADDRESS

NO.68C, SANYANJING HUTONG
DONGCHENG DISTRICT
BEIJING, CHINA, 100009

PHONE

+86 10 84047979

WEB

JINGSHANGARDEN-HOTEL.COM



SOUTH CAPE SPA & SUITE

NAMHAE, SOUTH KOREA

NEARBY ACTIVITIES

01

Golf Course

The main attraction of this luxurious resort.

02

Music Hall

Great for the music enthusiast. Able to find the fullest sound at any spot in the room.

03

Chaum Spa

Chaum Spa is one of Korea's best and first therapy spa, offering restorative services such as Organic Aromatherapy and Mineral Soaks.

04

Visitors can enjoy a fine dining experience at the hotel's restaurant, featuring fresh, seasonal seafood obtained locally.

05

Enjoy leisurely activities, such as trekking around a 4km course with a wonderful view of the blue seas and small islands that surround the area, table tennis, or even a detailed tour of the art found at South Cape.

South Cape Spa & Suite is a breath of fresh air facing the open Namhae sea. Their vision is to provide the "ultimate healing" experience for their guests. Every detail matters, as Jung Jae Bong combined his heart and soul into creating the extravagant golf resort complex.

The concrete walls sweep around the building like waves, allowing itself to complement and visually engage the sky above. Hotel rooms shine character with furniture from Ligne Roset, Geneva Sound Systems, Aesop Amenities, and DUX® beds from Sweden. Unique pieces, such as a rare piano found on the way to the music hall, or the various metal works found in the clubhouse at Cafe Volante, are just one of the many attributes that make South Cape a must-see destination.

ADDRESS

1545, HEUNGSEON-RO, JINDONG-RI,
CHANGSEON-MYEON, NAMHAE-GUN,
GYEONGSANGNAM-DO, REPUBLIC OF KOREA

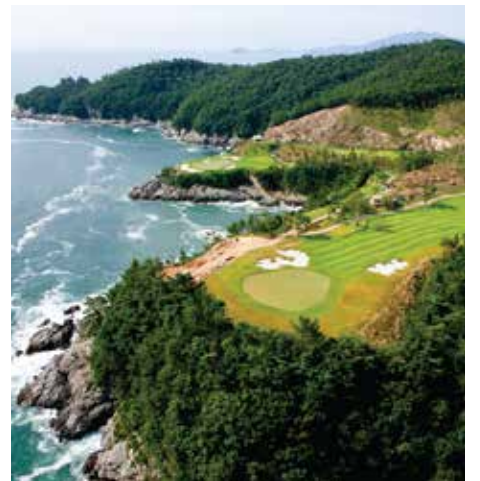
PHONE

+82-1644-0280

WEB

WWW.SOUTHCAPE.CO.KR





HISHIYA

KYOTO, JAPAN

NEARBY ACTIVITIES

01

Fukuchiyama Castle

Views across the Yura River, housing Japanese paintings, crafts and historical exhibits about the local Tamba area.

fukuchiyamacastle.jp

02

Il Pulcinella

Across from Hishiya, this famous Fukuchiyama, Neapolitan restaurant, uses local ingredients.

03

Motoise Naigu Kotai Shrine

Ancient shrine to enshrine Amaterasu, the Shinto Goddess of the Sun. Area's best hiking.

217 Oemachi Naiku,
Fukuchiyama City

04

Sandan-ike Park

Large prairie-like fields, zoo, lake and Children's Science Museum.

sandanike-kouen.or.jp

05

Adachi Otoemon

Famous, local Tamba chestnut dessert terrines, pound cakes and other sweet treats, plus a view of the factory.

otoemon.com

Fukuchiyama is a castle town located in the northwestern part of Kyoto Prefecture. Hishiya is located in Hishiya-cho, an area where the streets of a 16th century castle town still remain. Hishiya, a small inn built in the Taisho era (1912-1926), has been restored to its original state. The innkeeper, a travel enthusiast, carefully selected local traditional industries to authentically decorate the inn in order to welcome guests with the unique charm of Fukuchiyama, which cannot be found in other areas.

Fukuchiyama is the gateway city to the northern part of the Kansai region. This inn is recommended as a base for trips to the Sea of Japan side of the country, where you can enjoy the delicacies of the sea, or as a stopover on your journey.

ADDRESS
HISHIYA
KYOTO PREF, FUKUCHIYAMA, HISHIYA 52
KYOTO 620-8501, JAPAN

PHONE
+81773223536

WEBSITE
HISHIYA.KYOTO.JP





AMAN KYOTO

KYOTO, JAPAN



A remarkable setting, at one with the city's artistic soul Aman Kyoto represents the fruition of a beautiful landscape first conceived as the garden of a textile museum. Whimsical stone pathways curve gently along the forest floor, and stone slabs blanketed in moss serve as the foundations for the resort's architecture. The secluded grounds are part of what was an artistic community that gave rise to the revered Rinpa school of painting some 400 years ago, and are within easy reach of Kyoto's most important sites, including the stunning golden temple, Kinkakuji.

Both rooms and pavilions at Aman Kyoto

follow the traditions inherited by Japanese inns and are sublimated in a modern way to maximize the natural scenery. The minimalist interior that feels the warmth of wood is full of natural light and is a quiet and calm space. In the guest rooms of the building that blends into the forest, you can enjoy the scenery of the forest and garden from the windows on the whole wall, and from the hilltop pavilion, you can enjoy the trees such as maple and cedar, and the nearby mountains. The calm space composed of tatami mats and floors, and the cypress bath, invite you to relax in extraordinary times in the gently flowing ancient city.

NEARBY ACTIVITIES

- 01

Kinkakuji Temple
Golden Pavilion
Kita-Ku, Kyoto 603-8361
- 02

Fushimi Inari-taisha Shrine
The head shrine of Inari
Fushimi Ward, Kyoto 612-0882
- 03

Kamishichiken Ochaya
Ancient tea house experience for Aman guests
Kamishichiken, Kyoto
- 04

Kiyomizu-dera Temple
A beautiful Unesco World Heritage cite surrounded by cherry trees.
Higashiyama Ward, Kyoto
- 05

Koetsuji Temple
Explore the life of 16th-century master calligrapher, craftsman and artist Honami Koetsu
Kita Ward, Kyoto



ADDRESS
 AMAN KYOTO
 NO.11 OKITAYAMA WASHIMINE-CHO,
 KITA WARD, KYOTO, 603-8458, JAPAN

PHONE
 1 800 477 9180

WEB
 AMAN.COM/RESORTS/AMAN-KYOTO

duxiana.com/hotels

The DUX® Bed is available only at

DUXIANA®

THE GLOBAL LEADER IN SLEEP TECHNOLOGY

WWW.DUXIANA.COM



THE DUX BED

